



Border, Midland & Western
Regional Assembly
Investing in Your Future

INTRODUCTION TO THE BMW REGIONAL ASSEMBLY

Gerry Lavelle

**Border, Midland and Western Regional
Assembly**

November 2008



Ireland's EU Structural Funds
Programmes 2007-2013

Co-funded by the Irish Government
and the European Union



EUROPEAN REGIONAL
DEVELOPMENT FUND

PRESENTATION OUTLINE

- A little history
- Role of Regional Assemblies
- Regional Administration in Ireland
- Regional Operational Programme 2000 - 2006



Ireland's EU Structural Funds
Programmes 2007-2013

Co-funded by the Irish Government
and the European Union



EUROPEAN REGIONAL
DEVELOPMENT FUND

A little history!

- Ireland an EU member since 1973
 - Poorest country of then 12 member states
- Started to avail of Structural Funds from 1989
- Four programming periods
 - 1989 to 1993
 - 1994 to 1999
 - 2000 to 2006
 - 2007 to 2013



Ireland's EU Structural Funds
Programmes 2007-2013

Co-funded by the Irish Government
and the European Union



EUROPEAN REGIONAL
DEVELOPMENT FUND

1989 to 1999

- Ireland qualified as objective I region
- Two Programming Periods
 - 1989-1993 (EU funding: €4.2 billion, 2.1 % of GDP)
 - 1994-1999 (EU funding: €7.3 billion, 1.6% of GDP)
- Main focus
 - Economic convergence
 - Raising long-term growth potential
 - Addressing labour market imbalances



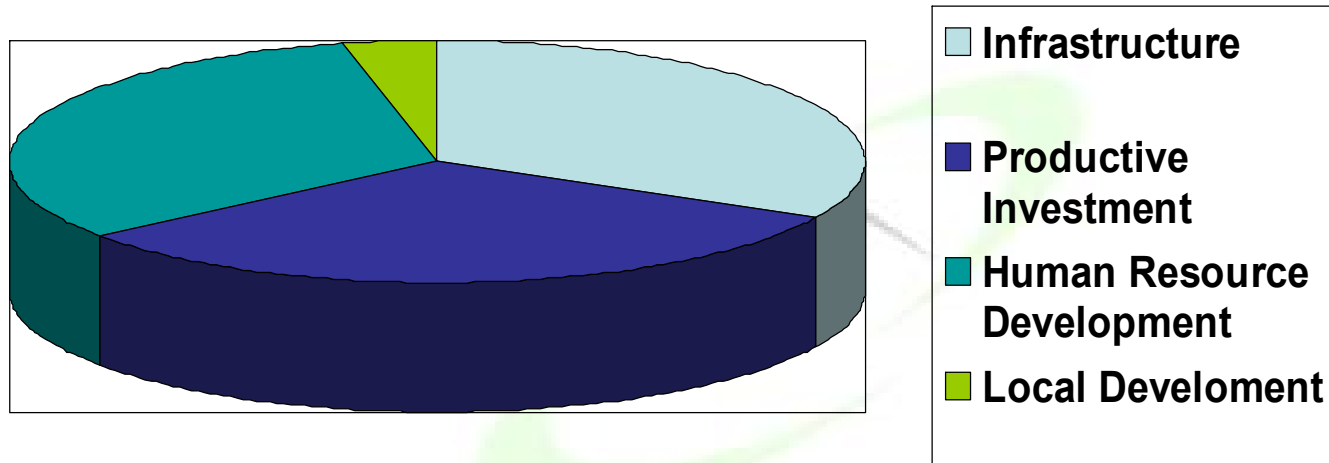
Ireland's EU Structural Funds
Programmes 2007-2013

Co-funded by the Irish Government
and the European Union



EUROPEAN REGIONAL
DEVELOPMENT FUND

Distribution of EU Funds, 1994 to 1999



Ireland's EU Structural Funds
Programmes 2007-2013

Co-funded by the Irish Government
and the European Union



EUROPEAN REGIONAL
DEVELOPMENT FUND

2000 - 2006

1999 – Ireland no longer qualified as a single region for EU objective 1 status

two regions designated in Ireland for Structural Funds Purposes:

- **The Border, Midland and Western Region (BMW) Region which retained Objective 1 status for Structural Funds for the full period to 2006**
- **The Southern and Eastern Region (S&E Region) which qualified for a six year phasing out regime for Objective 1 Structural Funds up to the end of 2005.**



Ireland's EU Structural Funds
Programmes 2007-2013

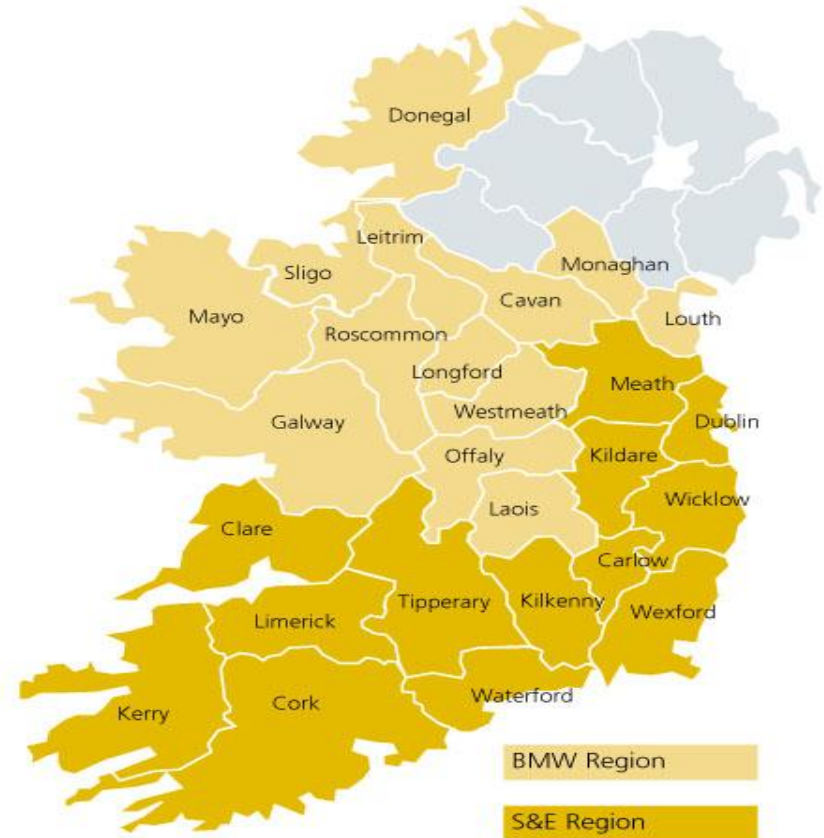
Co-funded by the Irish Government
and the European Union



EUROPEAN REGIONAL
DEVELOPMENT FUND

2000-2006

- Ineligible for objective 1
- Split into 2 separate NUTS II regions for EU purposes
 - Border, Midland and Western Region - Objective 1
 - Southern and Eastern Region – Transitional Objective 1 Status



Ireland's EU Structural Funds
Programmes 2007-2013

Co-funded by the Irish Government
and the European Union



EUROPEAN REGIONAL
DEVELOPMENT FUND

2000 to 2006 Funds

- Structural + Cohesion Funds: €3.9 billion
 - = 0.4% of GDP
- CSF formed part of larger NDP (€ 51 billion)
 - NDP included non-EU financed public investment
 - Health, social housing, social inclusion
 - Allocation of EU funds agreed with Commission
 - Common programming, monitoring and evaluation system



Ireland's EU Structural Funds
Programmes 2007-2013

Co-funded by the Irish Government
and the European Union



EUROPEAN REGIONAL
DEVELOPMENT FUND

Regional Operational Programme 2000-2006

European Regional Development Fund

- Over 28,000km of Non-National Roads improved
- €347m invested in Rural Water services
- €15m invested in Civic Amenity (Waste Recycling) Facilities
- 510 urban and village renewal projects completed
- €84m has been invested in broadband infrastructure
- 47 tourism projects with a value of €26m approved
- 2,500 enterprises grant aided and 26,500 entrepreneurs trained by County Enterprise Boards
- 5 Business Innovation Centres built by Institutes of Technology
- 36 Fishery Harbours Improved
- 238 new childcare centres constructed and 483 existing facilities upgraded



Ireland's EU Structural Funds
Programmes 2007-2013

Co-funded by the Irish Government
and the European Union



EUROPEAN REGIONAL
DEVELOPMENT FUND

Regional Operational Programme 2000-2006

- €100m invested in on-farm waste management facilities (EAGGF)
- €15.9m invested in the Dairy Hygiene Scheme
- €9m invested in Young Farmer Installation Aid (EAGGF)
- 19,479 hectares of degraded mature woodland have been improved (EAGGF)
- €27.8m provided by LEADER Groups have created 481 full-time and 544 part-time jobs in rural areas (EAGGF)
- €35m invested in 94 Aquaculture Projects (FIFG)
- Staffing grants to 1090 childcare workers in disadvantaged areas (ESF)



Ireland's EU Structural Funds
Programmes 2007-2013

Co-funded by the Irish Government
and the European Union



EUROPEAN REGIONAL
DEVELOPMENT FUND

Success Factors of the Irish Economy

- Social Partnership Agreements – taxes, wages, industrial stability – National Consensus
- European Regional Funding
- Access to EU and Global Markets
- Stable currency and interest rates and inflation
- Inward investment and availability of skilled workforce
- Low rate of Corporation Tax (12.5%)
- Rapid increase in tourist numbers and high cultural interest in Ireland
- Pro-enterprise policies and supports
- A well educated workforce

Irish Administrative System

- National level
 - 15 Government Ministries (Departments)
 - Headed by a Minister, government member
 - Policy development function
 - State bodies (e.g., National Roads Authority, Enterprise Ireland)
- Regional level
 - 2 Regional Assemblies (NUTS II)
 - 8 Regional Authorities (NUTS III)
- Local/county level
 - Local Authorities (Municipalities)
 - 29 County Councils, 5 City Councils
- Overall a quite centralised system



Ireland's EU Structural Funds
Programmes 2007-2013

Co-funded by the Irish Government
and the European Union



EUROPEAN REGIONAL
DEVELOPMENT FUND

Co-ordination of Structural Funds Programmes

- In Ireland the Department of Finance has overall responsibility for budgetary and public expenditure matters and is also the lead authority for the Structural Funds
- All public expenditure (co-financed and non co-financed) is pre-financed by the Irish exchequer
- Expenditure on co-financed measures is not dependent on direct EU receipts
- Annual budgetary and expenditure estimates processes take account of EU expenditure commitments and forecasts



Ireland's EU Structural Funds
Programmes 2007-2013

Co-funded by the Irish Government
and the European Union



EUROPEAN REGIONAL
DEVELOPMENT FUND

REGIONAL ADMINISTRATION IN IRELAND

- **8 REGIONAL AUTHORITIES (NUTS III) established in 1993**

- Elected representatives of local authorities
- 5 year term of office
- Regional Planning Guidelines and Policy Co-ordination
- Represented on Programme Monitoring Committees
- Staff of 3-5 Employees
- No legislative or tax-raising powers

- **2 REGIONAL ASSEMBLIES (NUTS II) established in 1999**

- Elected representatives of local authorities
- 5 year term of office
- Managing Authorities for Regional OPs
- Represented on Programme Monitoring Committees
- Interreg National Correspondents
- Staff of 13 each
- No legislative or tax-raising powers



Ireland's EU Structural Funds
Programmes 2007-2013

Co-funded by the Irish Government
and the European Union



EUROPEAN REGIONAL
DEVELOPMENT FUND

Regional Assemblies

Regional Assembly

B.M.W. 29

S&E 41

Regional Authorities

B.M.W. 3

S&E 5

County Councils

County Borough

Corporations



Ireland's EU Structural Funds
Programmes 2007-2013

Co-funded by the Irish Government
and the European Union



EUROPEAN REGIONAL
DEVELOPMENT FUND

Role of Regional Assemblies

- **Manage the Regional Operational Programmes under the NDP**
- **Monitor the general impact of all E.U. Programmes under the N.D.P. / C.S.F. in their regions**
- **Promote the co-ordination of the provision of Public Services in the Region**
- **Evolving role in creating a regional identity**
- **Highlighting issues of concern for the region**
- **Ensuring that national policies take the regional dimension into account**



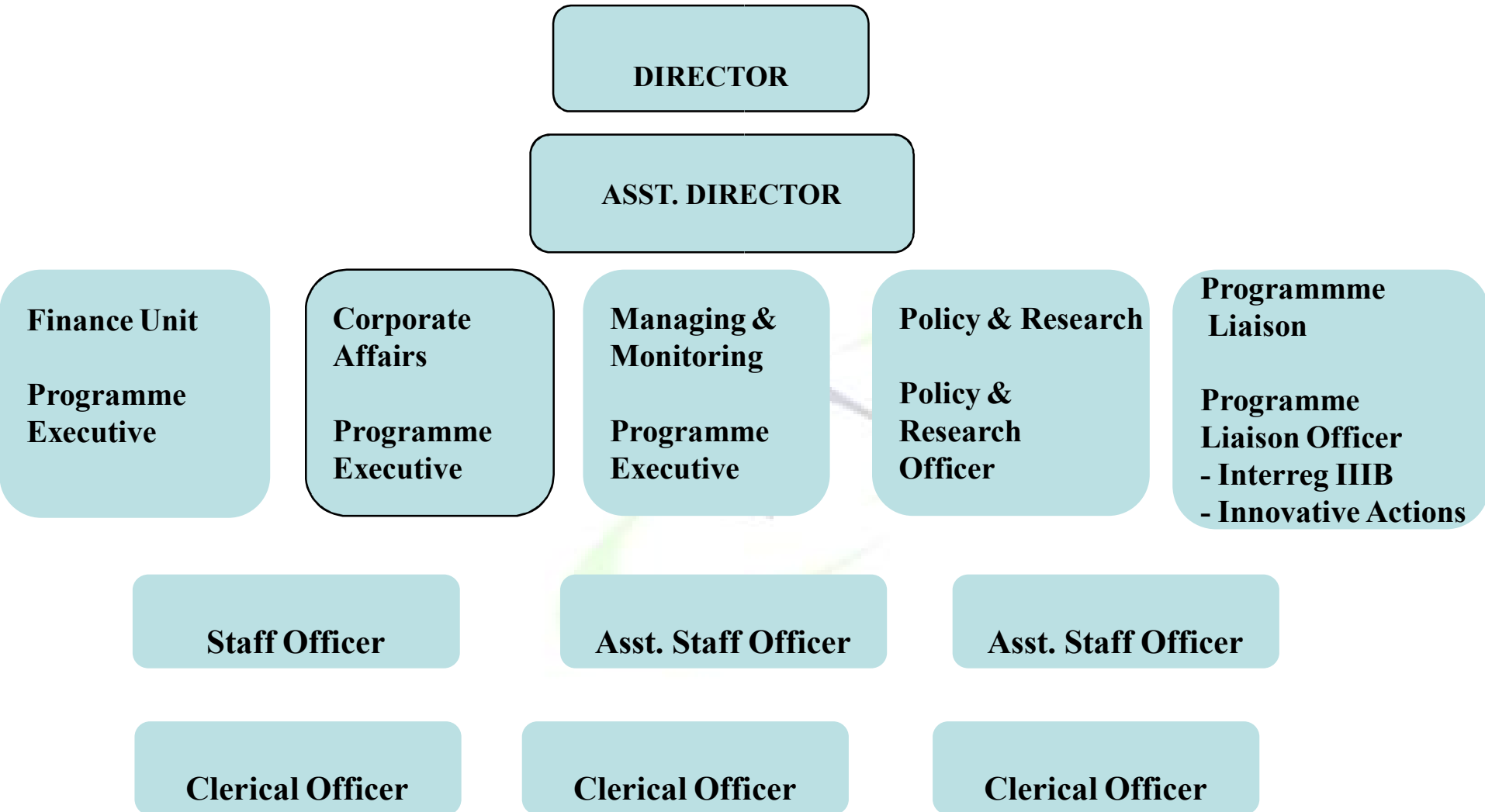
Ireland's EU Structural Funds
Programmes 2007-2013

Co-funded by the Irish Government
and the European Union



EUROPEAN REGIONAL
DEVELOPMENT FUND

STAFF STRUCTURE



Ireland's EU Structural Funds
Programmes 2007-2013

Co-funded by the Irish Government
and the European Union



EUROPEAN REGIONAL
DEVELOPMENT FUND

Contact Details

BMW Regional Assembly

The Square

Ballaghaderreen

Co. Roscommon, Ireland

Tel. (353) 094 9862970

Fax. (353) 094 9862973

Email: info@bmwassembly.ie

Website: www.bmwassembly.ie

National Development Plan:

Website: www.ndp.ie



Ireland's EU Structural Funds
Programmes 2007-2013

Co-funded by the Irish Government
and the European Union



EUROPEAN REGIONAL
DEVELOPMENT FUND